

FaceStation 2

Smart Face Recognition Terminal






Suprema FaceStation 2 is the most advanced face recognition terminal providing loads of the world's best features. Powered by Suprema's latest innovation in facial biometrics, FaceStation 2 offers unrivalled matching speed, accuracy and level of security. With Suprema's patented optic engineering, FaceStation 2 achieves up to 25,000 lx of operating illuminance which in turn, brings all-round confidence regardless of lighting conditions. Packed in an ergonomically-designed structure, FaceStation 2 provides exceptional performance and usability for diverse access control and time attendance sites, large or small.

FaceStation 2

Smart Face Recognition Terminal

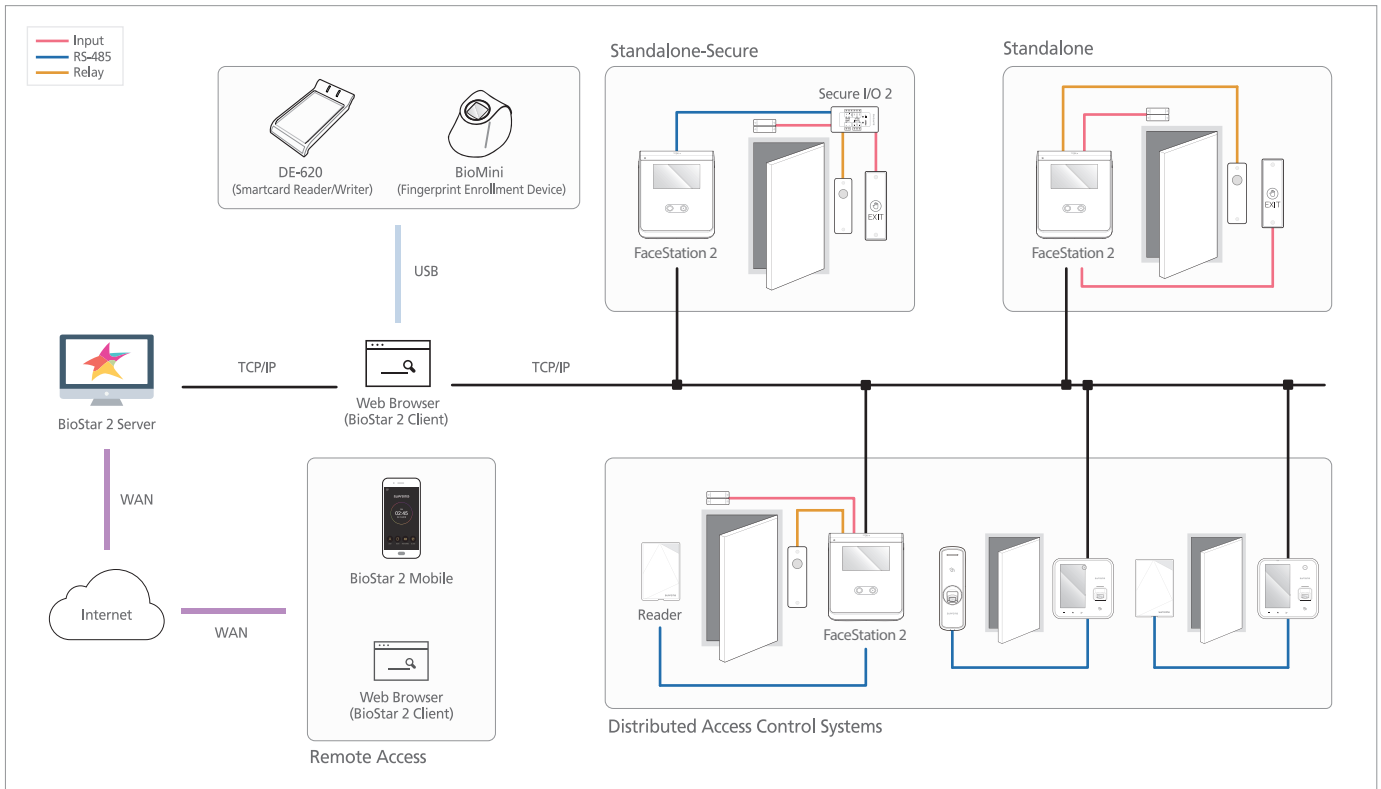
Features

- 
Ultra Performance
 - Matching Speed: 1:3,000 match/sec
 - * Group Matching: 1:5,000 match/sec
 - User Capacity: Max 30,000 users (1:1), 3,000 users (1:N)
- 
Highest Operating Illuminance
 - Operating illuminance from 0 lx to 25,000 lx
 - Highest operating illuminance available
 - Covers complete darkness to all indoor lighting conditions
- 
Enhanced Security
 - Live face detection: IR-based image analysis to prevent spoofing by printed images and LCDs
 - Enhanced security by Android 5.0 Lollipop
 - High quality Image log
- 
Multi RFID Card Reading
 - LF(125KHz), HF(13.56MHz) dual-band
 - Reads all card types that HID multiCLASS supports (EM/HID Prox/MIFARE/iCLASS/DESFire/FeliCa/NFC)
- 
Ergonomics & User Convenience
 - Extended height range: 145cm – 210cm
 - Tilt-type bracket for wheelchair persons & children
 - Android 5.0 Lollipop based intuitive GUI
 - Improved face enrolment procedure

Specifications

Category	Features	FS2-D	FS2-AWB	
Credential	Biometric	Face		
	RF Options	125kHz: EM 13.56MHz: MIFARE, MIFARE Plus, DESFire/EV1, FeliCa, NFC	(Includes all FS2-D's RF types) 125kHz:HID Prox 13.56MHz: iCLASS SE/SR 2.4GHz: BLE	
	RF read range*	MIFARE/DESFire/iCLASS : 50 mm EM/HID Prox/Felica: 30 mm, BLE: 50 mm		
General	CPU	1.4 GHz Quad Core		
	Memory	8GB Flash + 1GB RAM		
	LCD type	4" color TFT LCD		
	LCD resolution	800 x 480 pixels		
	IR LED	140 ea		
	Sound	24 bit Voice DSP (echo cancellation)		
	Operating temperature	-20°C ~ 50°C		
	Operating humidity	0% ~ 80%, non-condensing		
	Dimensions (W x H x D)	141 mm x 164 mm x 125 mm		
	Weight	Device: 548g, Bracket: 74g (incl. washer and bolt)		
Face	Certificates	CE, FCC, KC, RoHS, REACH, WEEE, BT SIG		
	Power	DC 24V 2.5 A		
	Image dimension	720 x 480 pixels		
	Live Face Detection	Supported		
	Capacity	Max. User	30,000 (1:1), 3,000(1:N)	
		Max. Log	5,000,000 (text), 50,000 (image)	
		Wi-Fi	IEEE 802.11 b/g (FS2-AWB only)	
	Interfaces	Ethernet	Supported (10/100/1000 Mbps, auto MDI/MDI-X)	
		RS-485	1ch Host or Slave (Selectable)	
		Wiegand	1ch In and 1ch Out	
TTL input		2 Inputs		
Relay		1 Relay		
USB		USB 2.0 (Host)		
Tamper		Supported		
Video Phone		SIP-based VoIP (Video + Voice)		

System Configurations



Suprema Inc.

17F Parkview Tower, 248, Jeongjail-ro, Bundang-gu, Seongnam-si, Gyeonggi-do, 13554, Rep. of KOREA

Tel: +82 31 783 4502 | Fax: +82 31 783 4503 | Inquiry: sales@supremainc.com | www.supremainc.com

©2018 Suprema Inc. Suprema and identifying product names and numbers herein are registered trade marks of Suprema, Inc. All non-Suprema brands and product names are trademarks or registered trademarks of their respective companies. Product appearance, build status and/or specifications are subject to change without notice.

[[AHL-FST2-180110-06-EN]]