

# BioStation 2

Fingerprint IP Access terminal



BioStation 2 incorporates the latest Suprema technology in a beautiful exterior. It combines a new powerful processor. Suprema's next generation optical sensor and improved fingerprint sensing & capturing algorithm to offer unrivaled performance. BioStation 2 provides users with instant authentication and rapid data transfer to manage high volume data with ease. It is ideal for applications that requires versatility without compromise in style and performance.

# BioStation 2

## Fingerprint IP Access terminal

### Features



#### Instant Matching & Authentication

- Improved matching algorithm, memory handling and powerful processor up to 20,000 matches per second



#### Rapid Data Transfer

- Optimal data transfer between the server and the device to transfer up to 5,000 user data in under a minute



#### Expanded Memory Capacity

- 1,000,000 fingerprint template
- 3,000,000 event logs



#### IP65 Certified Dust & Water Protection

- Ideal for harsh environment and outdoor installation



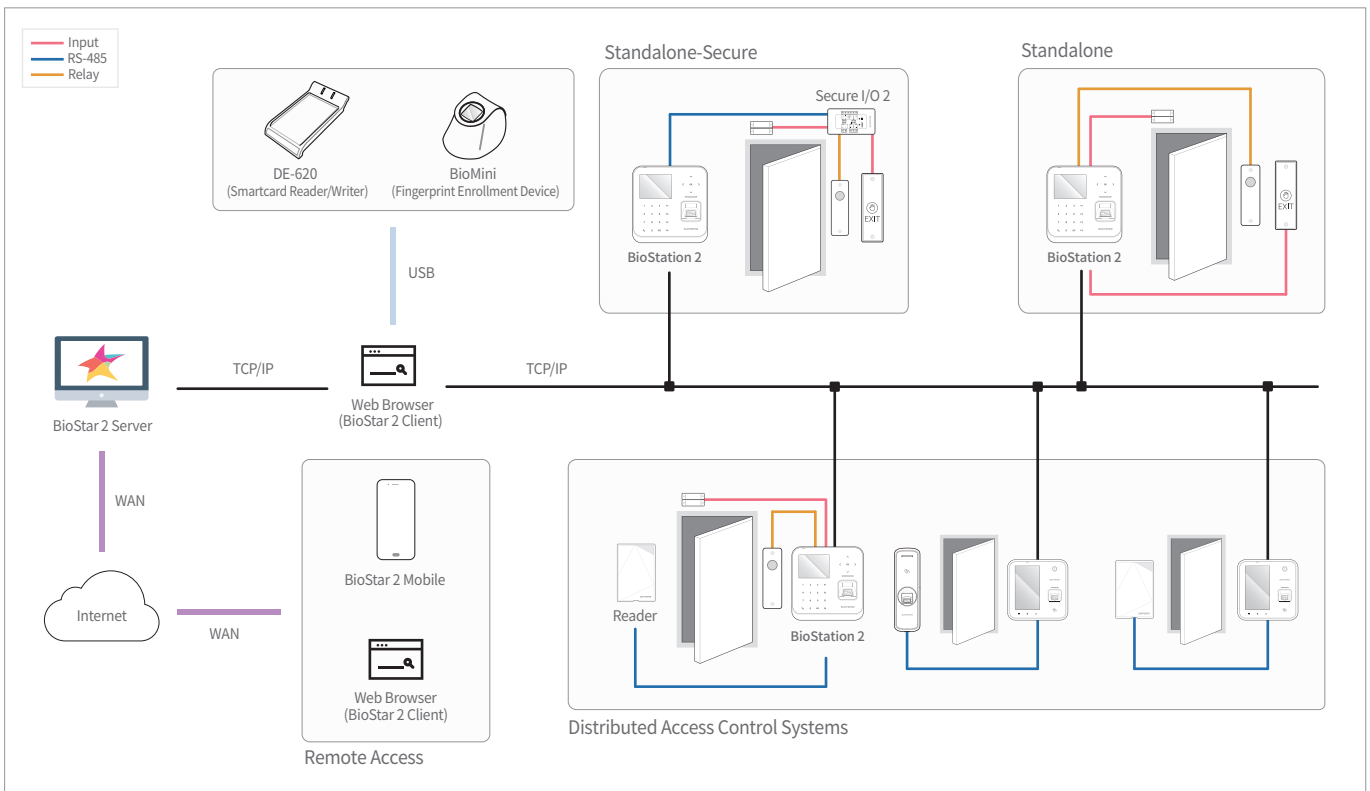
#### Versatile Interface

- Built-in WiFi and Power-over-Ethernet functionality for wide range of installation options

### Specifications

Biometric	Fingerprint								
Sensor Type	Optical Sensor (OP5)								
Template	SUPREMA / ISO 19794-2 / ANSI 378								
Extractor / Matcher	MINEX certified and compliant								
LFD	Supported								
RF Option	<table border="1"> <tr> <th>B52-OEPW</th> <th>B52-OHPW</th> <th>B52-OIPW</th> <th>B52-OMPW</th> </tr> <tr> <td>125 KHz EM</td> <td>125 KHz HID Prox</td> <td>13.56MHz MIFARE, MIFARE Plus, DESFire/EV1, FelCa, iCLASS SE/SR, NFC, ISO14443A/B, ISO15693</td> <td>13.56MHz MIFARE, MIFARE Plus, DESFire/EV1, FelCa, NFC, ISO14443A, ISO15693</td> </tr> </table>	B52-OEPW	B52-OHPW	B52-OIPW	B52-OMPW	125 KHz EM	125 KHz HID Prox	13.56MHz MIFARE, MIFARE Plus, DESFire/EV1, FelCa, iCLASS SE/SR, NFC, ISO14443A/B, ISO15693	13.56MHz MIFARE, MIFARE Plus, DESFire/EV1, FelCa, NFC, ISO14443A, ISO15693
B52-OEPW	B52-OHPW	B52-OIPW	B52-OMPW						
125 KHz EM	125 KHz HID Prox	13.56MHz MIFARE, MIFARE Plus, DESFire/EV1, FelCa, iCLASS SE/SR, NFC, ISO14443A/B, ISO15693	13.56MHz MIFARE, MIFARE Plus, DESFire/EV1, FelCa, NFC, ISO14443A, ISO15693						
CPU	1.0 GHz Single Core								
Memory	8GB Flash + 256MB RAM								
Max. User	500,000 (1:1), 20,000(1:N)								
Max. Template	1,000,000(1:1), 40,000(1:N)								
Max. Logs	3,000,000(text)								
LED	Multi-Color								
Sound	16-bit Hi-Fi								
Ethernet	Supported (10/100 Mbps, auto MDIX)								
RS-485	1ch Host or Slave (Selectable), OSDP V2.1.6								
Wiegand	1ch Input, 1ch Output								
TTL	2ch Inputs, 2ch Outputs								
Relay	1 Relay								
PoE	Supported (IEEE 802.3af compliant)								
Tamper	Supported								
Power	Voltage: DC 12V Current: Max. 1A								
Operating Temperature	-20°C ~ 50°C								
Operating Humidity	0% ~ 80%, non-condensing								
Dimensions (WxHxD, mm)	142 x 145 x 45 mm								
Unit Weight	440g								
Certificates	CE, FCC, KC, RoHS, REACH, WEEE								

### System Configurations



### Suprema Inc.

17F Parkview Tower, 248, Jeongjail-ro, Bundang-gu, Seongnam-si, Gyeonggi-do, 13554, Rep. of KOREA

Tel: +82 31 783 4502 | Fax: +82 31 783 4503 | Inquiry: sales@supremainc.com | www.supremainc.com

©2018 Suprema Inc. Suprema and identifying product names and numbers herein are registered trademarks of Suprema, Inc. All non-Suprema brands and product names are trademarks or registered trademarks of their respective companies. Product appearance, build status and/or specifications are subject to change without notice.

[AHL-BS2-180111-03-EN]

**Suprema**  
BIOMETRICS & SECURITY